

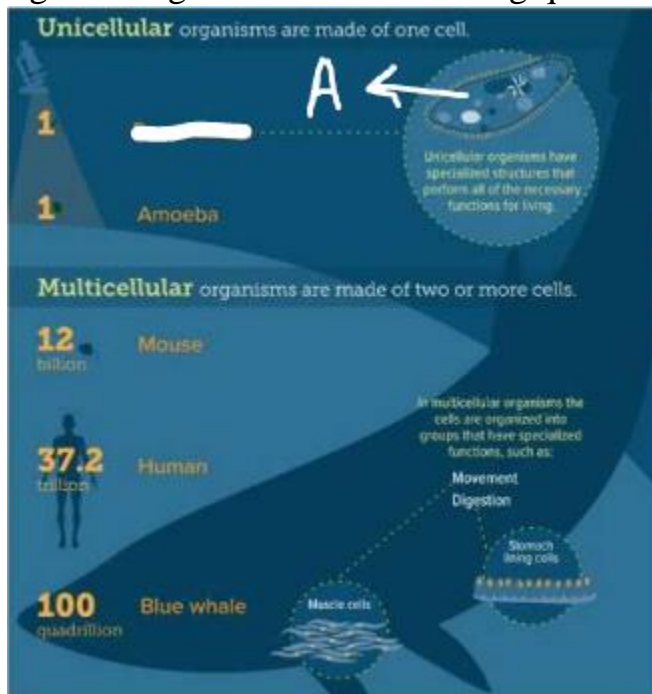
Science Revision Test 1

Name: _____

Class: _____

1. In addition to being made up of cells, what are the six characteristics shared by all living things?

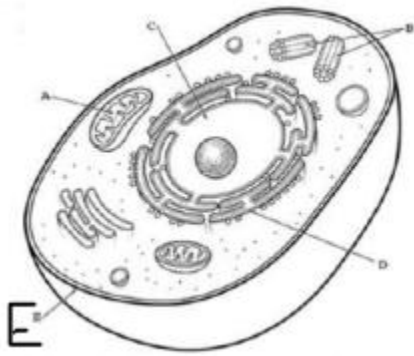
2. Using the image answer the following questions.



- i) Identify the organism labelled as A.

- ii) What do you notice about scale, proportion, and quantity of cells in unicellular versus multicellular organisms?

3. Using the image answer the following questions.



i) Identify the part of the cell marked as E.

ii) What are the two functions of the part of the cell marked E?

4. i) Write an argument which explains which human tissue is most similar to dermal tissue in plants.

ii) List the four types of tissues that form the stomach, an organ.

